



3159 STEVENSON DRIVE

PEBBLE BEACH, CALIFORNIA

WATERBRIDGE HOUSE

\$9,500,000

WaterbridgeHousePB.com



SCAN ME

Hold up your phone's camera to visit the property's website.

With sweeping views of Spyglass Hill's 11th fairway and filtered ocean vistas, the Waterbridge House is an extraordinary estate thoughtfully designed with Scandinavian-Japanese minimalism. This newly constructed compound is comprised of the stunning main house, a private ADU, and a Tea House (Guest House) floating on water. The architecturally significant estate embraces clean lines, symmetry, and intentional simplicity, blending timeless natural elements with modern form. Two architectural axes—interior and exterior—guide you through spaces that reveal and conceal, including the “Waterbridge,” a glazed walkway over a tranquil pond. The sculptural “Cloud Steps” lead to a light-filled interior where polished concrete floors, Western floor-to-ceiling windows, Italian concealed Infinity doors, and Poliform cabinetry define quiet luxury. Sustainability meets sophistication with triple-glazed windows, an airtight façade, radiant heat, and an automated energy recovery system. From Sub-Zero, Wolf, and Miele appliances to Italian Flos lighting and Simply White plaster walls, every detail reflects enduring craftsmanship and environmental mindfulness. Located in the heart of Pebble Beach near The Lodge and by the Spyglass Club House, Waterbridge House is a half mile to the beach and just a short drive from all the wonderful amenities of Carmel, Big Sur, and the entire Monterey Peninsula.



831.214.1990 | DRE#00891159
TimAllenProperties.com
Team@TimAllenProperties.com



The property information herein is derived from various sources that may include, but not be limited to, county records and the Multiple Listing Service, and it may include approximations. Although the information is believed to be accurate, it is not warranted and you should not rely upon it without personal verification. ©2024 Coldwell Banker. All Rights Reserved. Coldwell Banker and the Coldwell Banker logos are trademarks of Coldwell Banker Real Estate LLC. The Coldwell Banker® System is comprised of company owned offices which are owned by a subsidiary of Anywhere Advisors LLC and franchised offices which are independently owned and operated. The Coldwell Banker System fully supports the principles of the Fair Housing Act and the Equal Opportunity Act.

FLOOR PLAN

MAIN LIVING AREA

2,698 SqFt

LOWER LEVEL

1,118 SqFt

ADU

649 SqFt

TEA HOUSE

(GUEST HOUSE)

427 SqFt

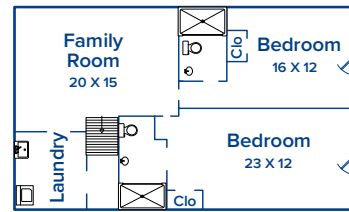
GARAGE

849 SqFt

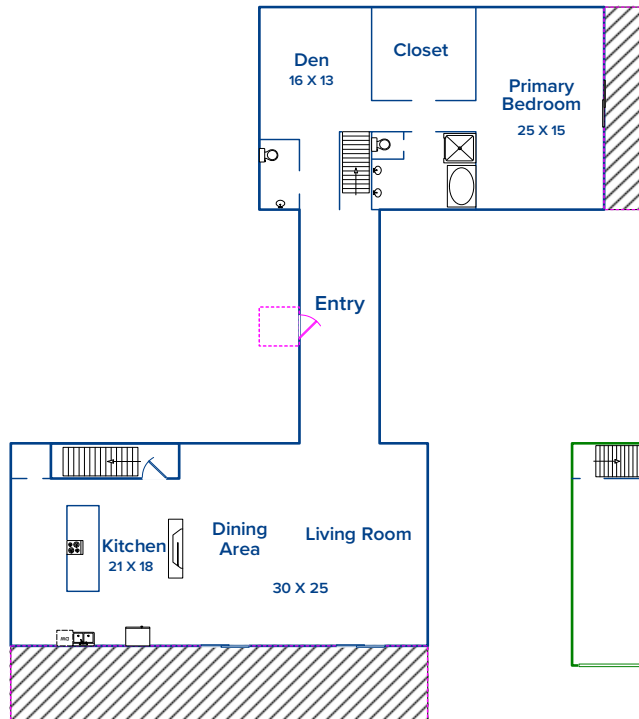
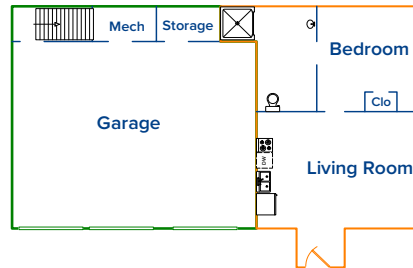
**Tea House
(Guest House)**



Lower Level



ADU



This model is for use as a visual tool only. Some measurements are estimates. Therefore, no appraisal value should be inferred.

SPECIFICS



5 Bedrooms



5.5 Bathrooms



4,892 SqFt



0.68 Acres

Interior:Simply White Plaster

Exterior:Stucco

Fireplace:Western Liner Fireplaces

Heat:Radiant Heating System

Roof: Long-Lasting TPO Roofing System

Floors:Polished Concrete

Garage:3-Car

Year Built:2025

2% Buyers Brokerage Compensation | Brokerage Compensation not binding unless confirmed by separate agreement among applicable parties.